

The background image shows a residential street with a drainage ditch in the foreground. A yellow diamond-shaped sign with a black arrow pointing up and a red circle with a diagonal slash is visible. The text is overlaid in blue on the image.

**CITY PARK REDEVELOPMENT AUTHORITY
TAX INCREMENT REINVESTMENT ZONE 12**

**TIMBERGROVE & LAZYBROOK AREAS
DRAINAGE STUDY**

EXISTING CONDITIONS PUBLIC MEETING

**MAY 11, 2022
6:00 PM – 7:00 PM**

AGENDA

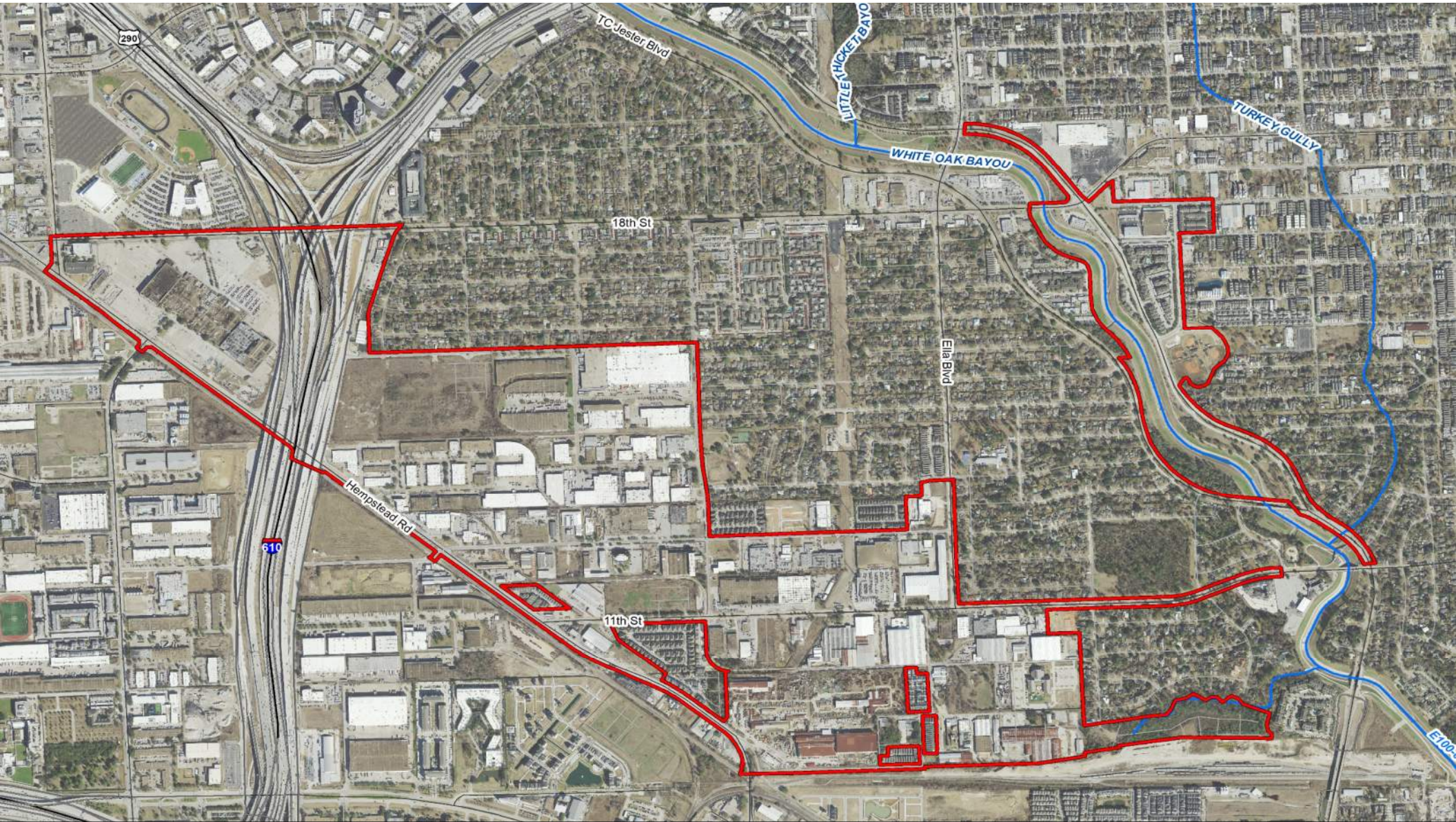
- | | |
|------------------------------------|--------------------|
| ■ Introduction | 6:00 to 6:10 PM |
| ■ Project Presentation, including: | 6:10 to 6:30 PM |
| — Project Introduction | |
| — Project Outlook and Next Steps | |
| — Request for Information | |
| ■ Exhibit Review and Q&A | 6:30 PM to 7:00 PM |
| ■ Meeting Concludes | 7:00 PM |

CITY PARK REDEVELOPMENT AUTHORITY – TIRZ 12

■ What is a TIRZ?

Tax Increment Reinvestment Zones (TIRZs) are special zones created by City Council to attract new investment in an area. These zones help finance costs of redevelopment and promote growth in areas that would otherwise not attract sufficient market development in a timely manner. Taxes attributable to new improvements (tax increments) are set-aside in a fund to finance public improvements within the boundaries of the zone.

The purpose of the zone is to advance a mixed-use development project by providing a funding mechanism for the construction of a major thoroughfare called East T.C. Jester Boulevard, reconstruction of the 18th Street and 20th Street intersection, reconstruction of Bevis Street, park facilities, and a portion of the City of Houston hike and bike trail.



290

TC Jester Blvd

LITTLE HICKET BAYO

TURKEY GULLY

WHITE OAK BAYOU

18th St

Ella Blvd

Hempstead Rd

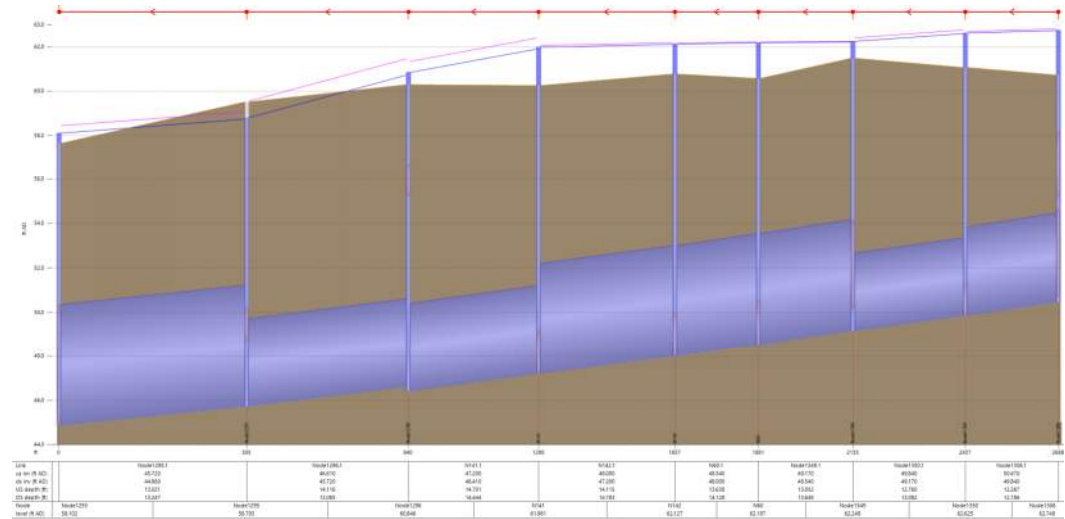
610

11th St

E100

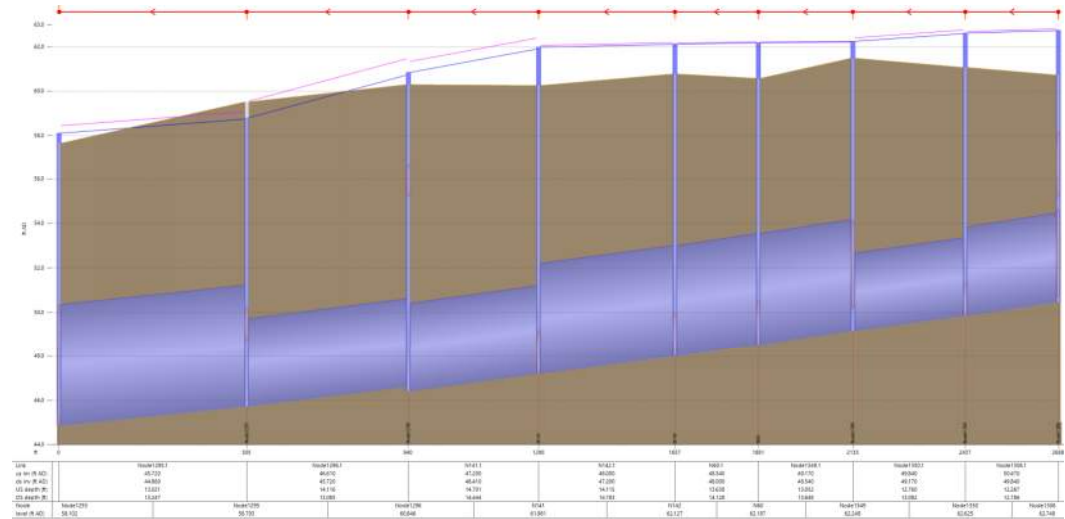
DRAINAGE IMPROVEMENT ANALYSIS

- Identify drainage issues
- Evaluate potential solutions
 - Determine flood reduction effectiveness
 - Develop high level cost estimate
- Develop a plan to implement solutions
- TIRZ 12 implements plan



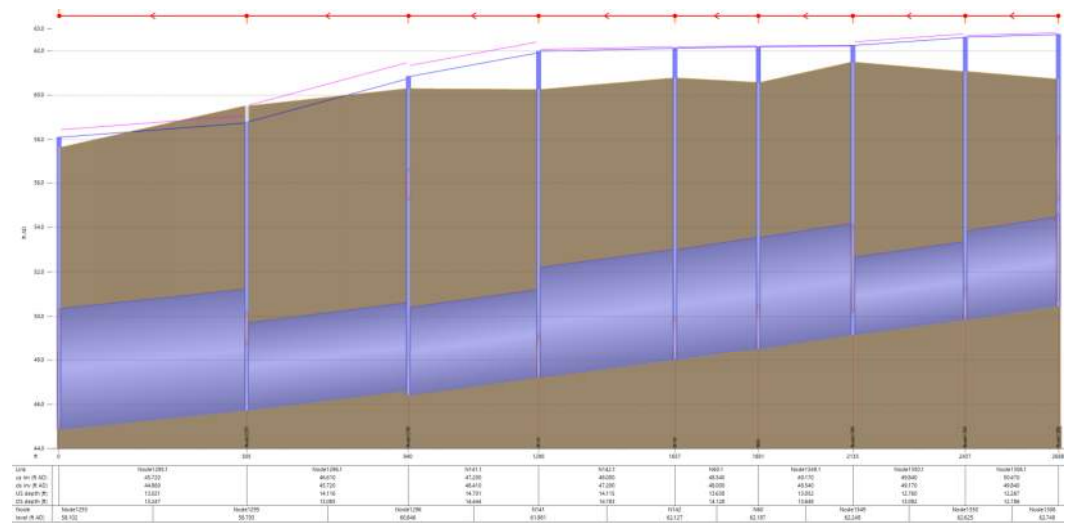
DRAINAGE IMPROVEMENT ANALYSIS

- Existing conditions analysis is complete
- Large exhibits have been placed around the room for your review and comment
- Project team requests your review and comment



DRAINAGE IMPROVEMENT ANALYSIS

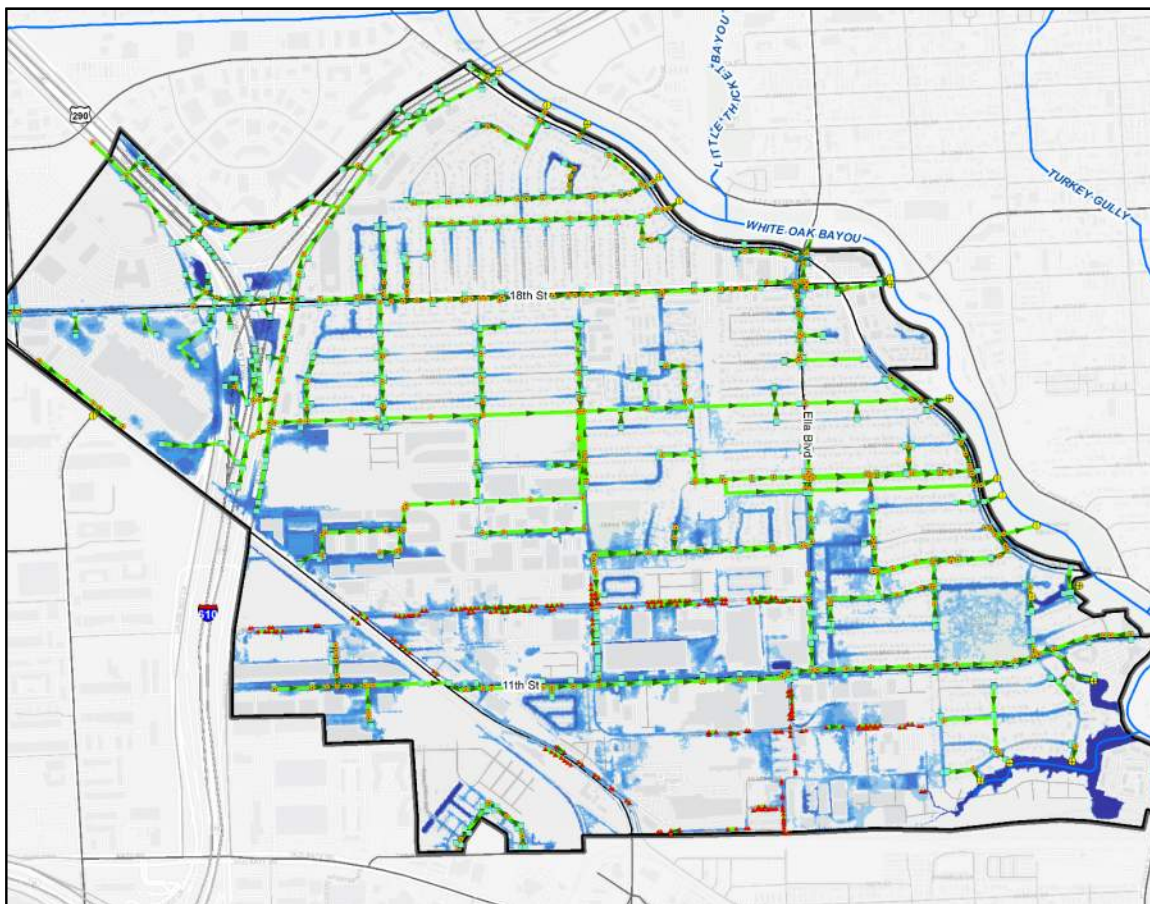
- Input from this meeting will be used to develop drainage improvement projects
- The next public meeting will present these project alternatives
- Final meeting will present the drainage plan for TIRZ 12



HISTORICAL STORMS | MEMORIAL DAY STORM (2015)

MEMORIAL DAY 2015

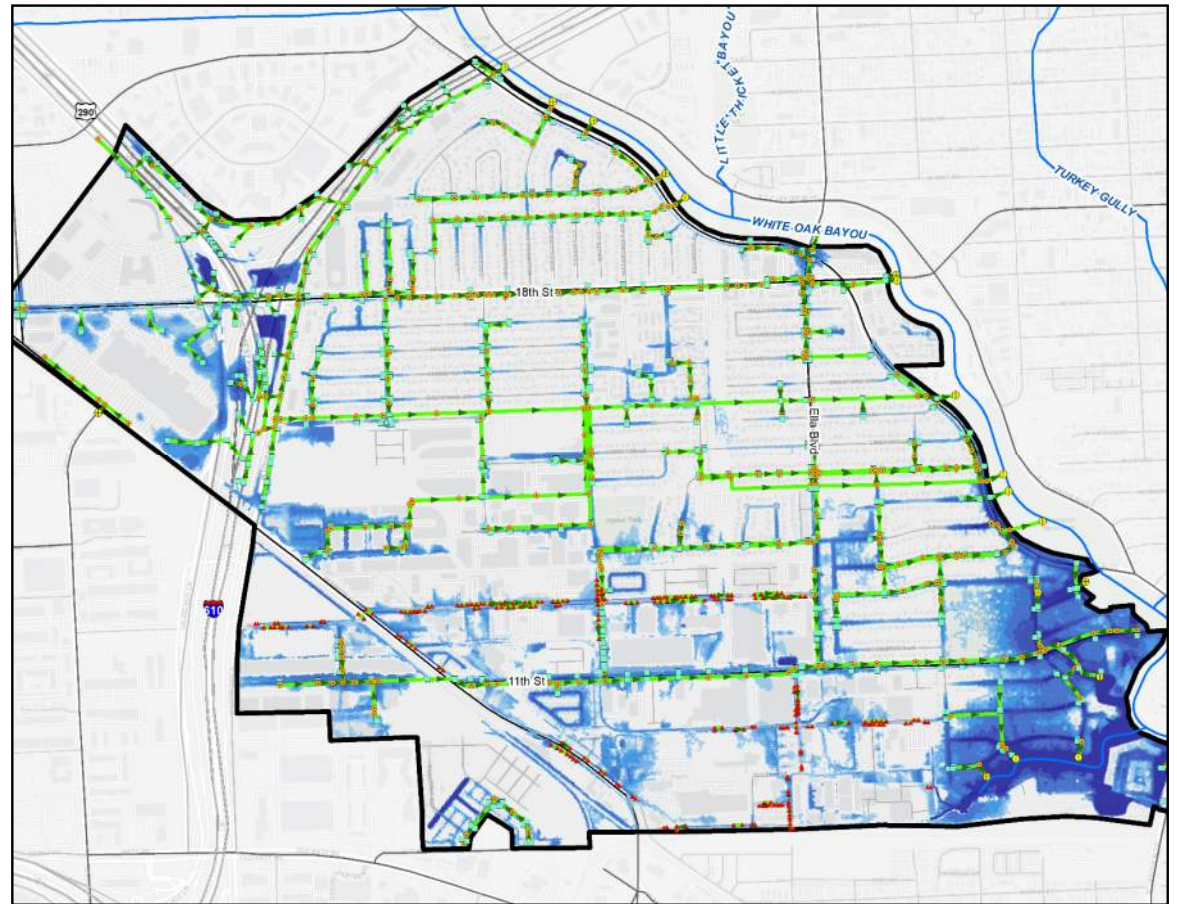
- Flooded structure claims (8)
- Street flooding was major issue



HISTORICAL STORMS | HURRICANE HARVEY (2017)

HURRICANE HARVEY 2017

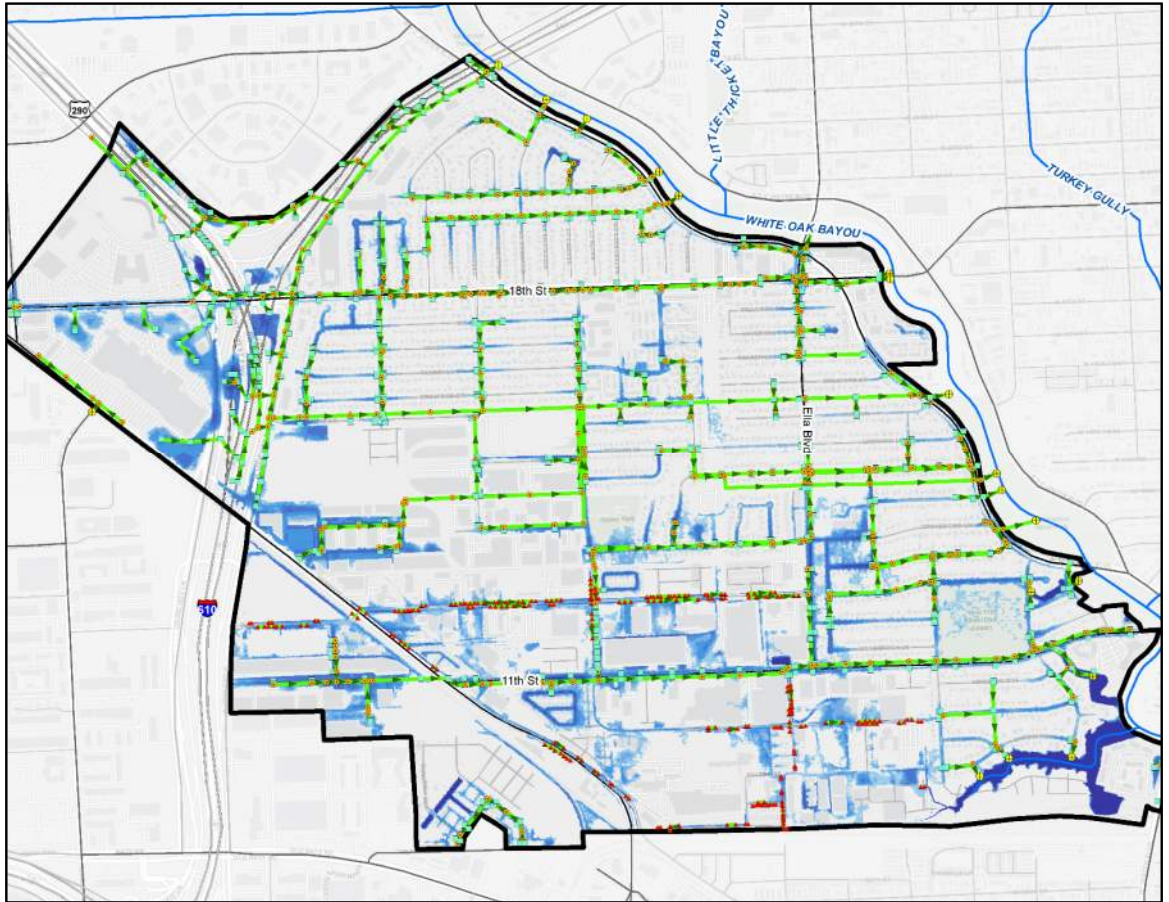
- Flooded structure claims (298)
- Combination of flooding from White Oak Bayou and street flooding
- 2nd highest water elevation in White Oak Bayou at Ella (TS Allison was higher)



HISTORICAL STORMS | TROPICAL STORM IMELDA (2019)

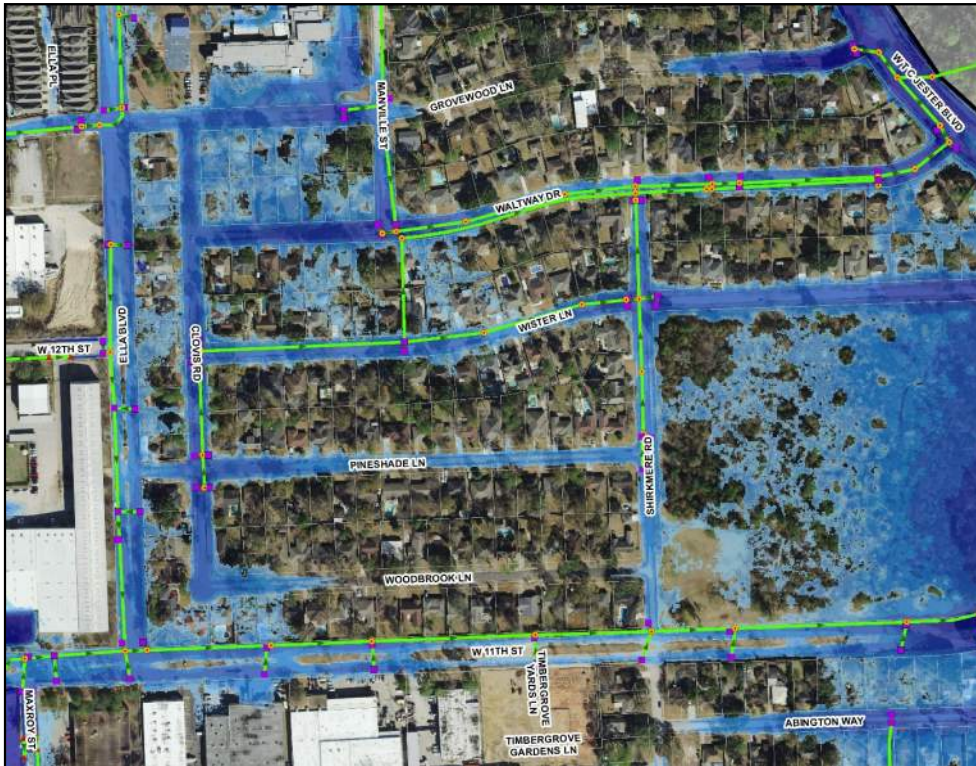
TROPICAL STORM IMELDA

- Flooded Structure Claims (0)
- Similar to Memorial Day inundation pattern



QUESTIONS? FEEDBACK?

Presentation will be sent to those who sign up



FLOOD RISKS | EVACUATION CORRIDORS

CORRIDOR EVALUATION

■ Locate Critical Facilities

- Fire/EMS
- Hospitals
- Schools
- Churches

■ Review Expected Flood

Depths

■ Identify Potential Access

Issues

